



Child Care 101 For Pediatricians

November 4, 2020

Indiana AAP Lunch & Learn



Disclosure information

Nancy Ward, BSN, RN-BC, CDDN
OECOSL Chief Nurse Consultant

I have no relevant financial relationships to
disclose.

Objectives



- Participants will increase their knowledge of the early education system in Indiana.
- Participants will be able to identify how pediatricians intersect with and can help to improve the quality of early education programs.



Services Provided



- Child Care Development Fund (CCDF)
 - Eligibility- >45,000 children; 95% single parent
- Criminal History Background Checks
- Regulate Child Care
 - LCC, LCCH, RM
- Paths to Quality®
 - Voluntary quality Improvement- 4 levels
- On My Way Pre-K
- School Age Childcare Grants
- Head Start Collaboration Office

Cost of Child Care and the Workforce

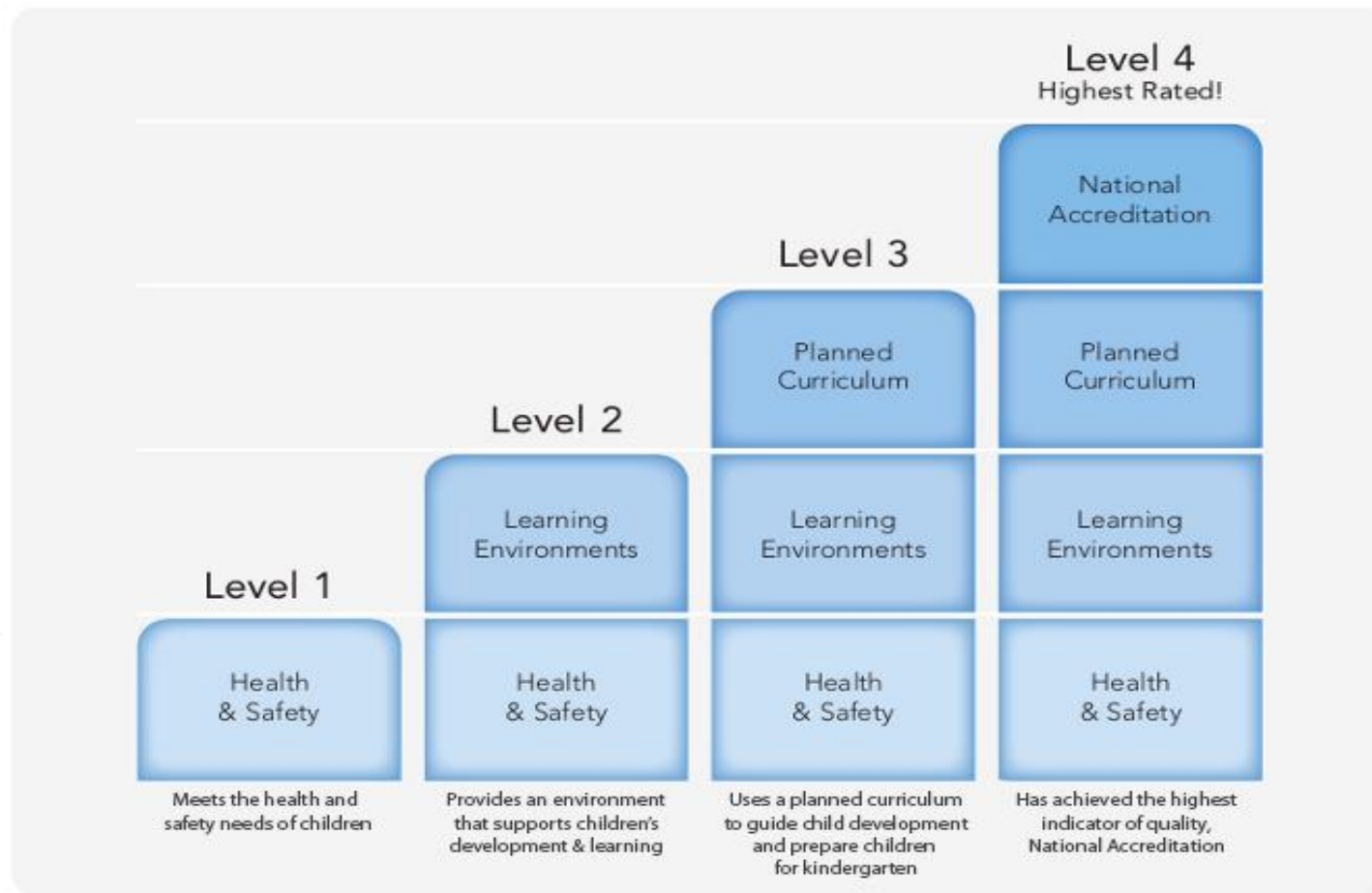


Average cost per month was \$606

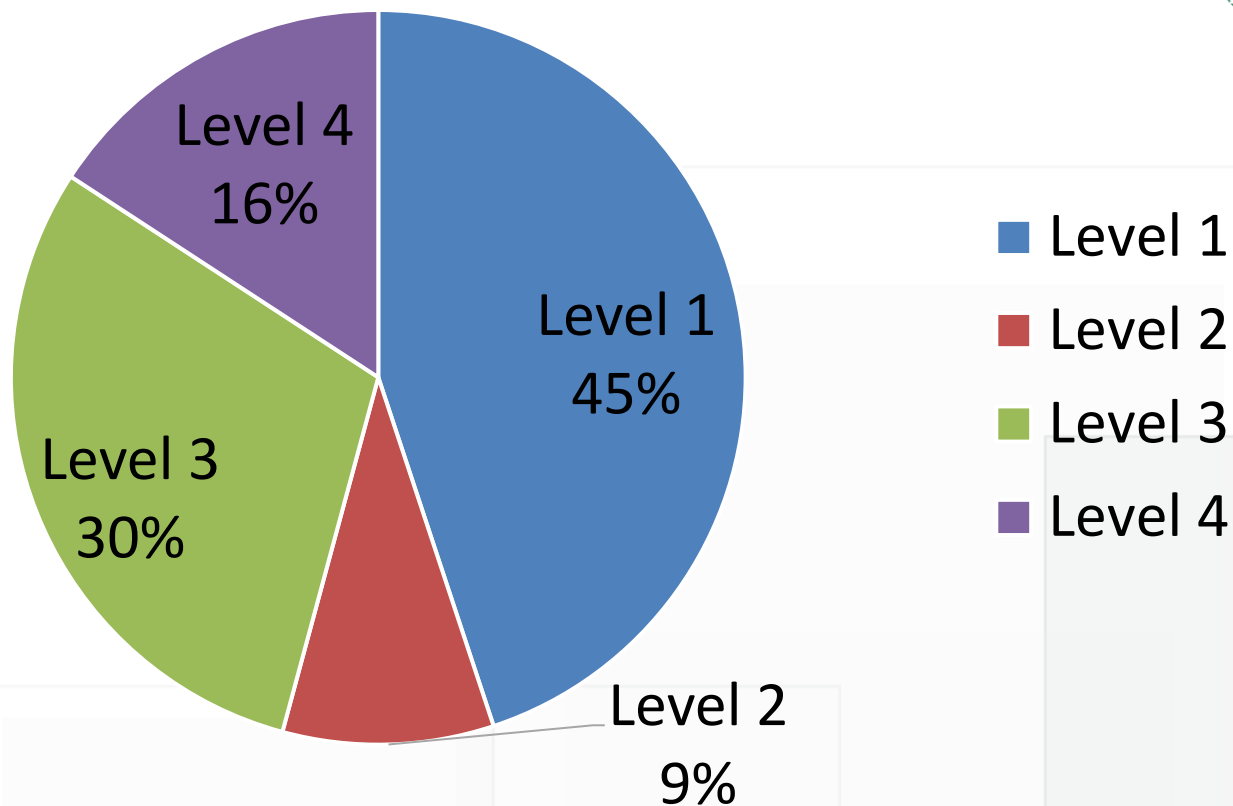
After completion of the TEACH program the average wage was \$10.40/ hour.

Average Literacy level of teachers participating in the CDA project was 6th grade and Math comprehension was 5th grade.

Paths to Quality®



Paths to Quality



What is Brighter Futures Indiana?



- Indiana's consumer education website for families raising young children
- Public-private partnership meeting both CCDBG reauthorization requirements (for the Office) and Lilly Endowment family engagement goals
- Empathetic, evidence-based, plain-language resource
- A website, social media presence and family support service - through our call center and chat function

What will families find?

In addition to helping families access search & chat options...

Family-friendly IN
Early Learning
Foundations

Info on Finding &
Paying for Care
Other Family
Services

Tools to Activate
Learning &
Support Them



PARTNERSHIPS
FOR EARLY LEARNERS

A PROGRAM OF EARLY LEARNING INDIANA.

Brighter Futures



<http://brighterfuturesindiana.org/>

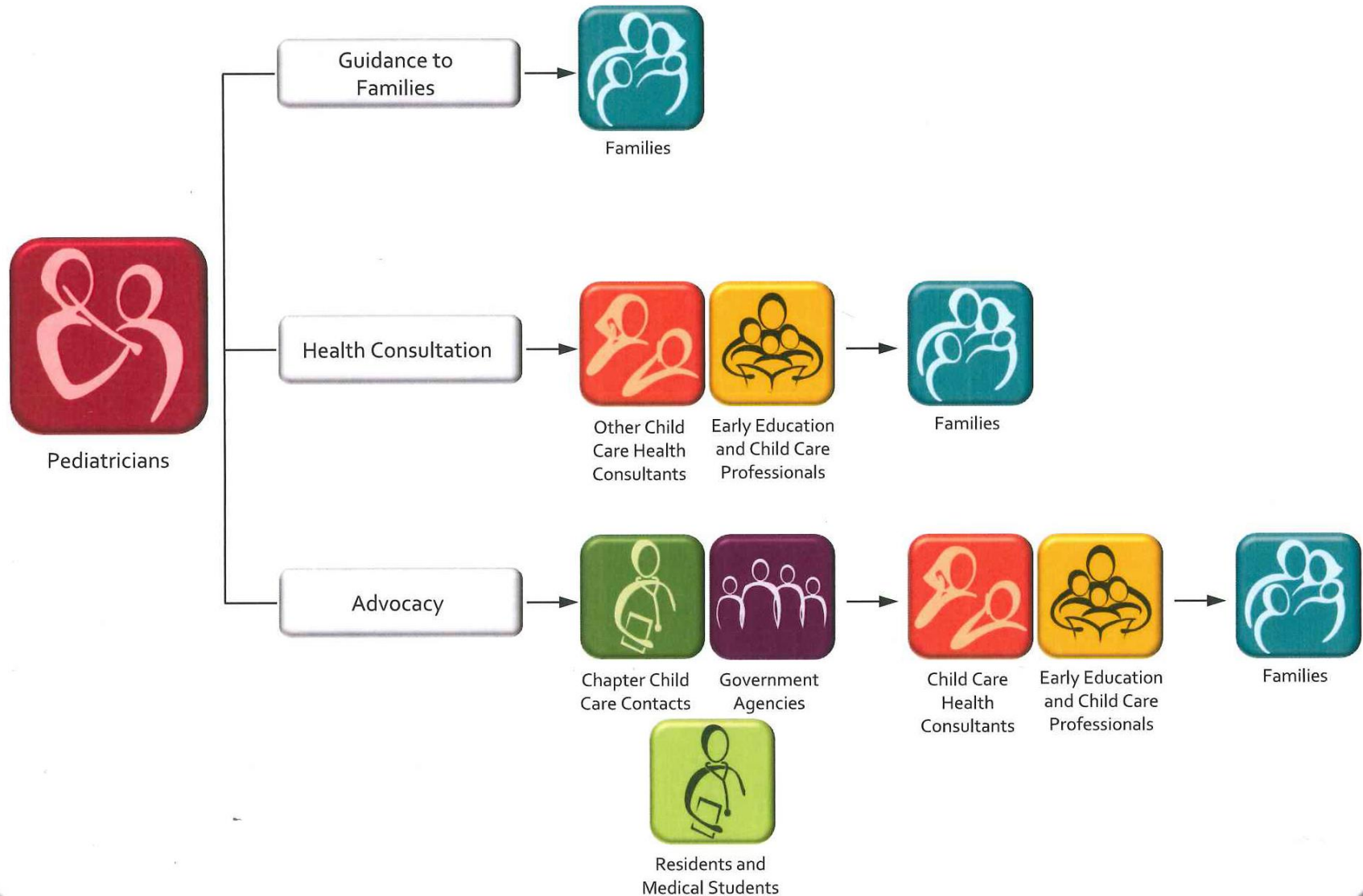




How can you support families and childcare providers?



THE IMPACT OF PEDIATRICIANS ON EARLY EDUCATION AND CHILD CARE

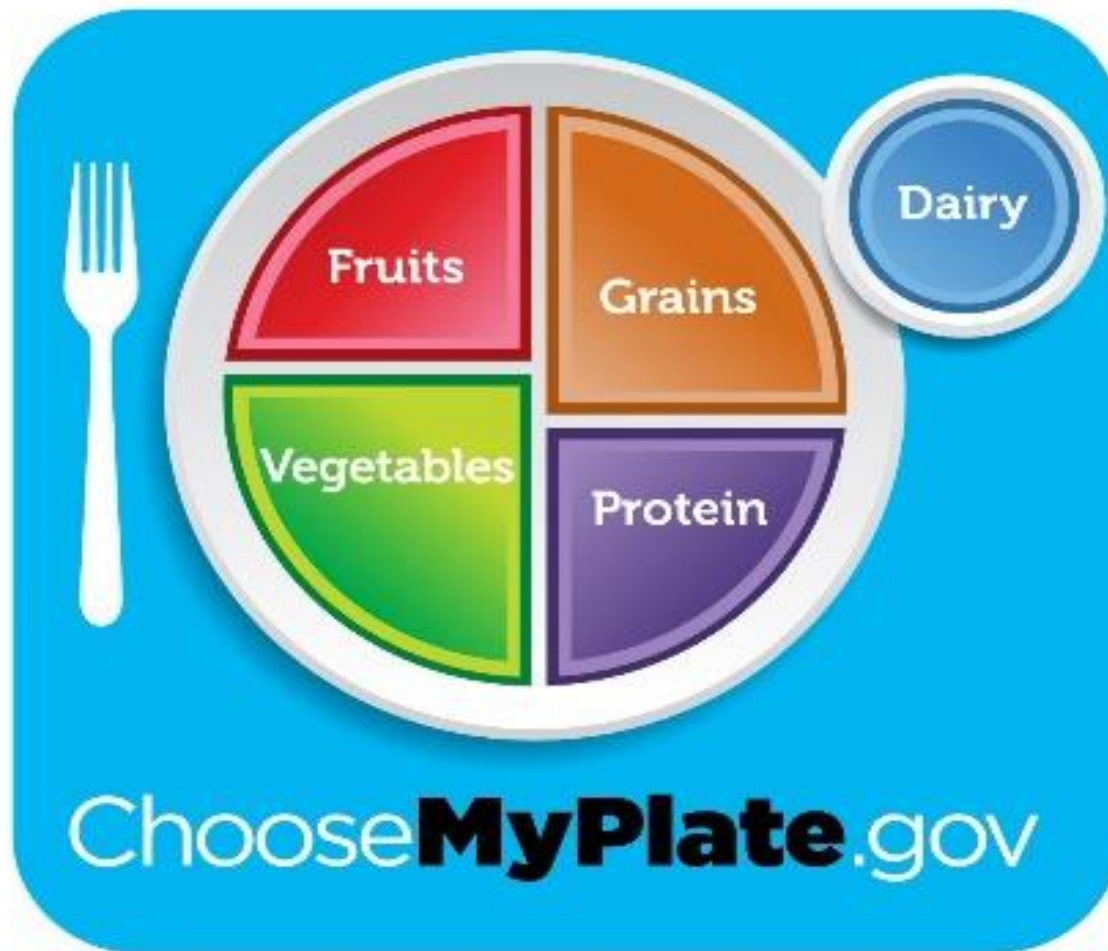


What might this look like?



- Provide child care health consultation services to a local child care program by observing and providing input on the health and safety related strengths and needed improvements in the environment and program operation as well as addressing concerns raised by the child care staff on an ongoing basis.
- Ensure that each enrolled child has a medical home, respecting the difference between program consultation and clinical relationships.
- Resolve apparently conflicting health and safety advice that the child care program receives from different sources.
- Conduct health education for staff, parents, and children
- Mentor other child care health consultants by providing technical assistance by phone or e-mail.

Special requests



Safe sleep in child care



Safe Sleep for Your Baby

Each year in the United States, thousands of babies die suddenly and unexpectedly. Some of these deaths result from **Sudden Infant Death Syndrome (SIDS)** and other sleep-related causes of infant death, such as suffocation.



Since the 1990s, when the U.S. back-sleeping recommendations were first released and public awareness efforts began, the overall U.S. SIDS rate has dropped.

But, as SIDS rates have declined, deaths from other sleep-related causes, such as suffocation, have increased, and certain groups remain at higher risk for SIDS than others.

For example, African American and American Indian/Alaska Native babies are at higher risk for SIDS than white, Hispanic, or Asian/Pacific Islander babies.

Safe Sleep Environment

To **reduce the risk** of SIDS and other sleep-related causes of infant death:



- ▶ Always place baby on his or her back to sleep, for naps and at night.



- ▶ Share your room with baby. Keep baby close to your bed, on a separate surface designed for infants.



- ▶ Use a firm and flat sleep surface, such as a mattress in a safety-approved crib*, covered by a fitted sheet with no other bedding or soft items in the sleep area.

* A crib, bassinet, portable crib, or play yard that follows the safety standards of the Consumer Product Safety Commission (CPSC) is recommended. For information on crib safety, contact the CPSC at 1-800-638-2772 or <http://www.cpsc.gov>.



Breastfeeding reduces the risk of SIDS

Babies who are breastfed or are fed expressed breastmilk are at lower risk for SIDS compared with babies who were never fed breastmilk. According to research, the longer you exclusively breastfeed your baby (meaning not supplementing with formula), the lower his or her risk of SIDS.

- ▶ If you bring baby into your bed for feeding, remove all soft items and bedding from the area. When finished, put baby back in a separate sleep area made for infants.*

- ▶ If you fall asleep while feeding baby in your bed, place him or her back in the separate sleep area as soon as you wake up.



Eunice Kennedy Shriver National Institute
of Child Health and Human Development



Learn more about SIDS and safe infant sleep:
<http://safetosleep.nichd.nih.gov>

Safe sleep



Medications & treatments



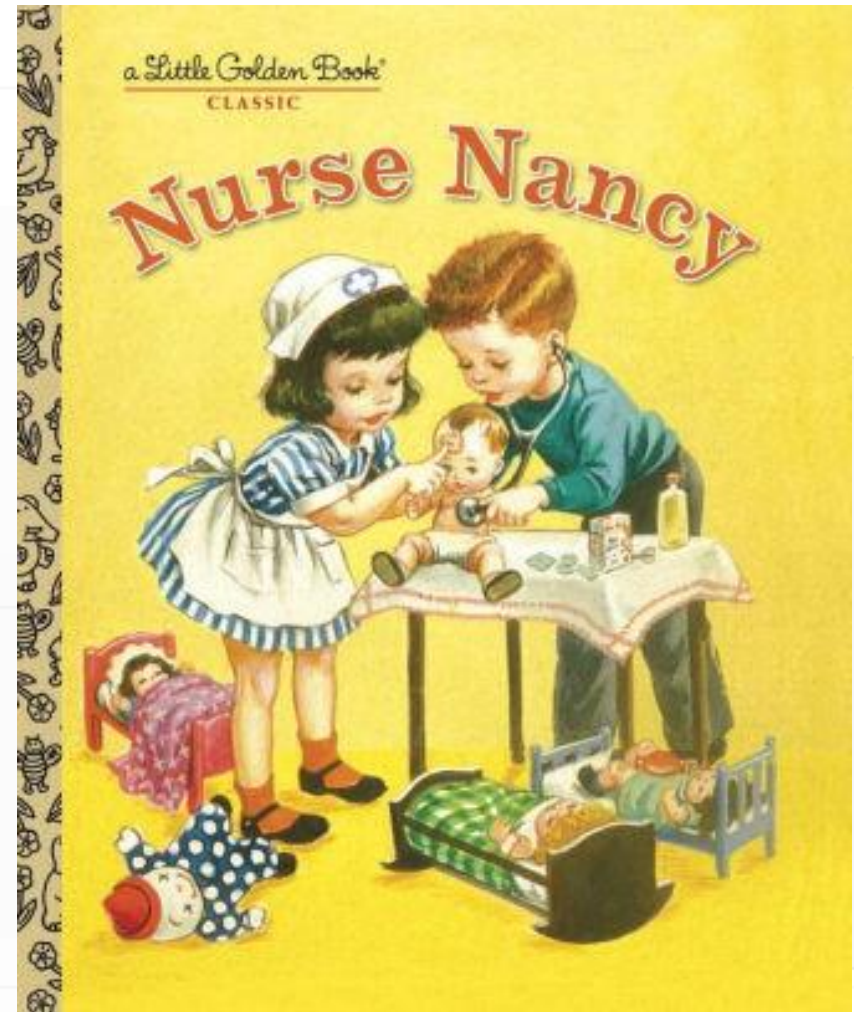
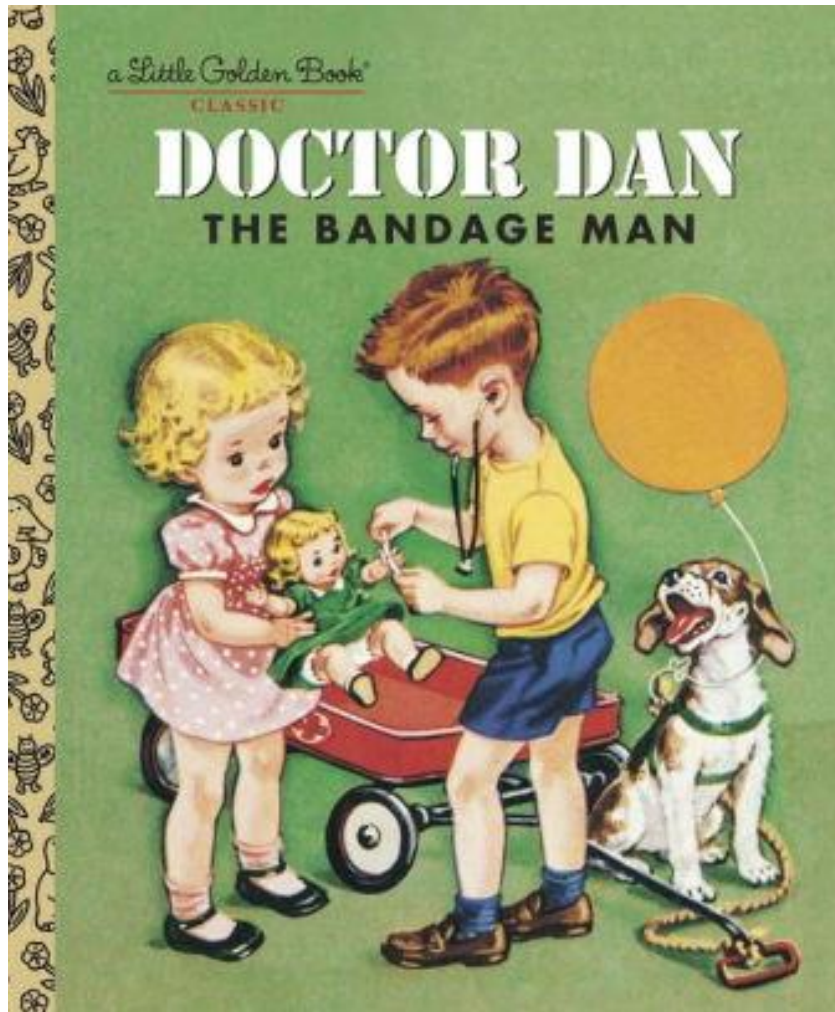
Medical conditions



- Diabetes
- Asthma
- Allergies
- Medications
- Autism Spectrum



Health consultants



Caring for Our Children

National Health and Safety Performance Standards
Guidelines for Early Care and Education Programs

FOURTH EDITION



American Academy
of Pediatrics

DEDICATED TO THE HEALTH OF ALL CHILDREN®



APHA PRESS

AN IMPRINT OF AMERICAN PUBLIC HEALTH ASSOCIATION



National Resource Center
for Health and Safety
in Child Care and
Early Education

AMERICAN ACADEMY OF PEDIATRICS

Managing Infectious Diseases in Child Care and Schools

A Quick Reference Guide, 4th Edition



Editors

Susan S. Aronson, MD, FAAP

Timothy R. Shope, MD, MPH, FAAP

American Academy of Pediatrics

DEDICATED TO THE HEALTH OF ALL CHILDREN®



Resources



- Caring for Our Children 4th ed. <http://nrckids.org/CFOC>
- Managing Infectious Diseases in Child Care and Schools 4th ed. <https://shop.aap.org/products/childcare/>
- AAP Advocacy & Policy <https://www.aap.org/en-us/advocacy-and-policy/aap-health-initiatives/healthy-child-care/Pages/Quality-Early-Education-and-Child-Care.aspx>

Resources



- Child care information site www.brighterfuturesindiana.org
-
- Early Learning Advisory Council www.elacindiana.org
-
- Paths to Quality www.childcareindiana.org
-
- Infant mental health www.infancyonward.org
-
- Indiana Licensing web site <https://www.in.gov/fssa/2552.htm>
-
- Zero to Three <https://www.zerotothree.org/>